

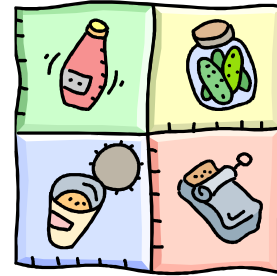
WASHINGTON STATE UNIVERSITY



LEWIS COUNTY EXTENSION

Gauge Testing Schedule for 2009

*All testing will be done at the
WSU Lewis County Extension Office
located at 351 NW North Street
Old Historic Courthouse
Chehalis WA 98532



*Call 360-740-1212 to make arrangements
for a group (6 or more at one location) or an off-site testing session.

Please note: Off-site sessions are available per volunteer availability.

Gauge testing dates are listed below:

Wednesdays

June 10, 17 & 24	10 am to 2 pm
▶ June 13 Special Session	11 am to 1pm Shop 'n Kart
▶ June 12 Special Session	10 am to 3 pm Sunbirds in Chehalis
July 1, 15 & 29	10 am to 2 pm
▶ August 1 & 8 Special Session	10 am to 3 pm; Sunbirds (1 st in Yelm; 8 th in Chehalis)
August 5, 12 & 26	10 am to 2 pm
September 9 & 23	10 am to 2 pm
October 7	10 am to 2 pm

Lids may be dropped off at the WSU Lewis County Extension office in advance, fees and paperwork must be completed before testing will occur.

\$2.00 fee per lid

For **Presto** gauges, bring lid with gauge attached.

For **All-American** gauges, bring gauge only.
Call 360-740-1212 for more information.